

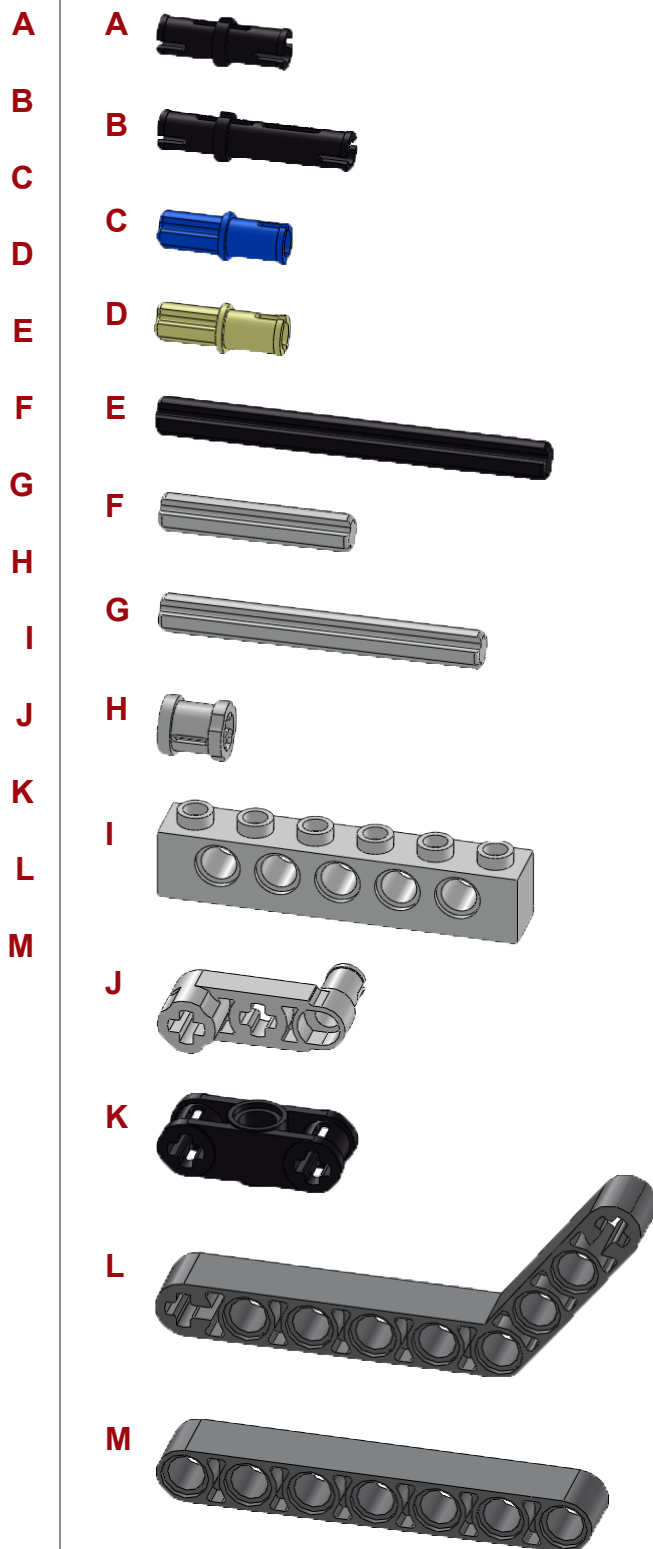
## Building Instructions



# Touch and Light Sensor Attachment

# Touch and Light Sensor Attachment

- 8x TECHNIC Pin with Friction
- 2x TECHNIC Pin Long with Friction
- 2x TECHNIC Axle Pin with Friction
- 2x TECHNIC Axle Pin
- 2x TECHNIC Axle 6
- 2x TECHNIC Axle 3
- 2x TECHNIC Axle 5
- 4x TECHNIC Bushing
- 1x TECHNIC Brick 1 by 6
- 2x TECHNIC Connector Crank
- 2x TECHNIC Crossblock Black
- 2x TECHNIC Angle Beam
- 2x TECHNIC Beam 7

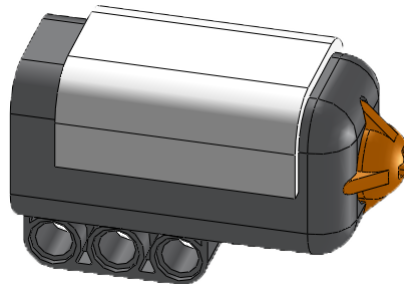
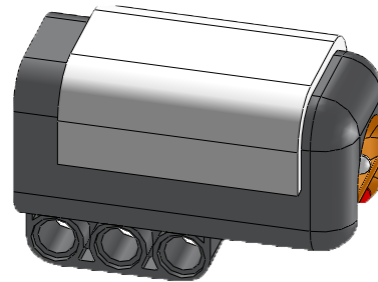
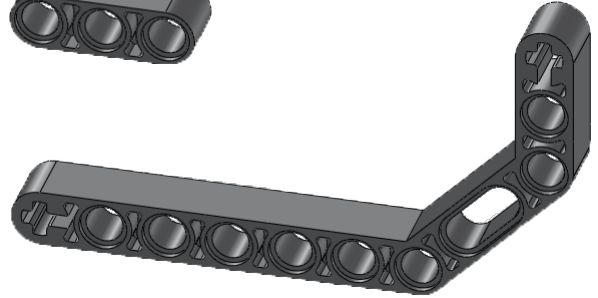
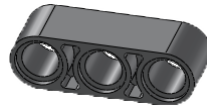


# Touch and Light Sensor Attachment

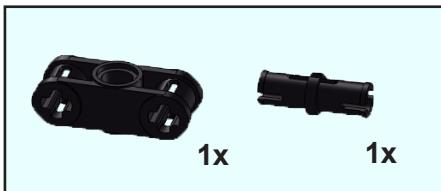
- 4x TECHNIC Beam 3
- 2x TECHNIC Angle Beam 9 by 5
- 1x LEGO NXT Light Sensor
- 1x LEGO NXT Touch Sensor
- 2x LEGO NXT Wire

N  
O  
P  
Q  
R

N  
O  
P  
Q  
R

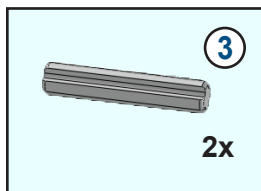


# 1

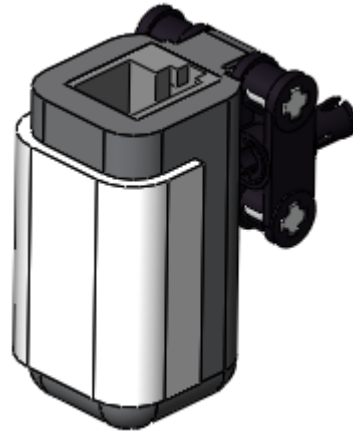
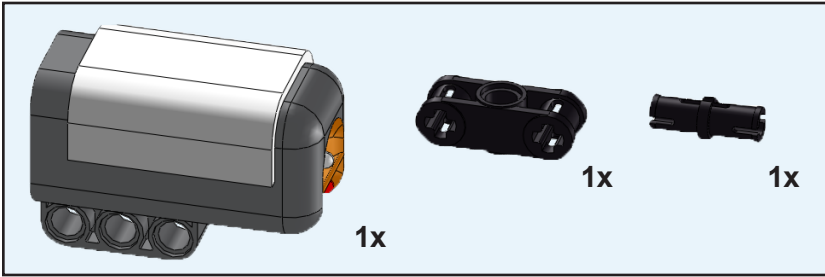


---

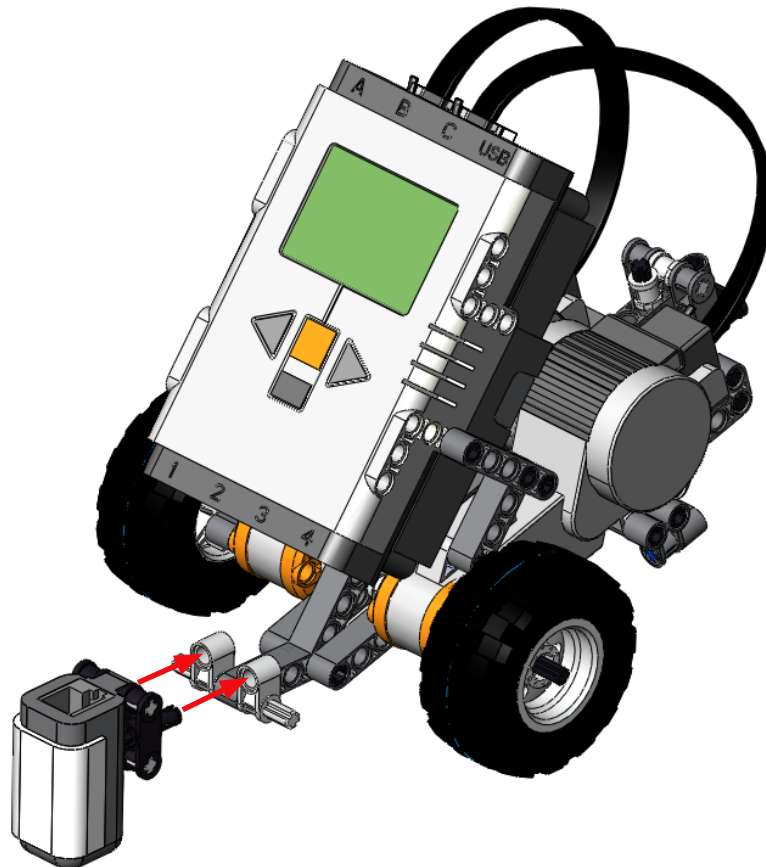
# 2



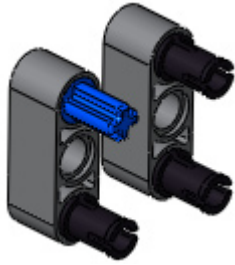
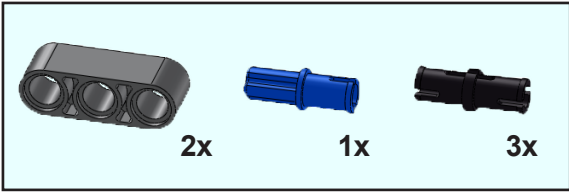
# 3



# 4

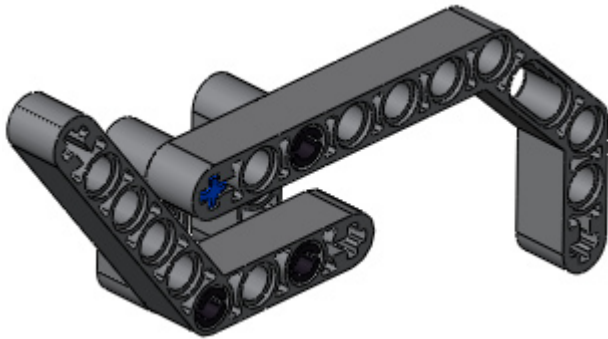
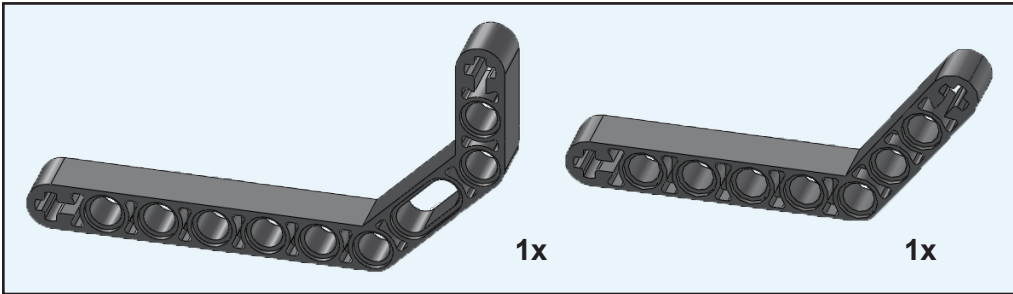


# 5

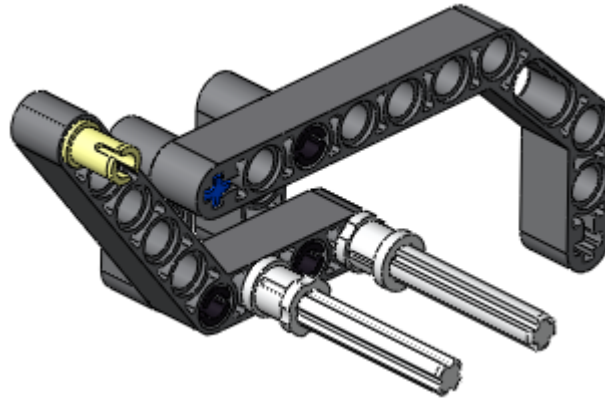
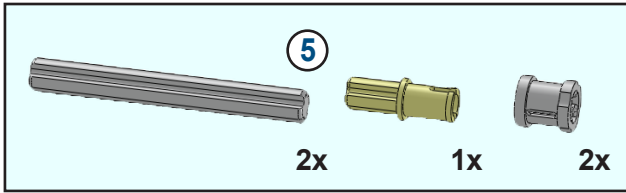


---

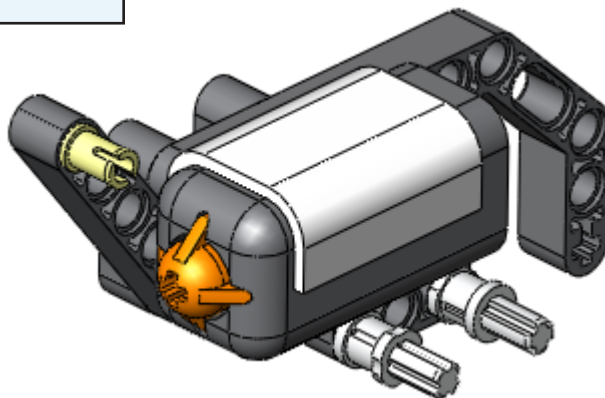
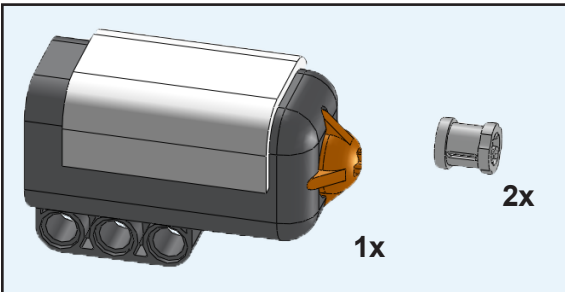
# 6



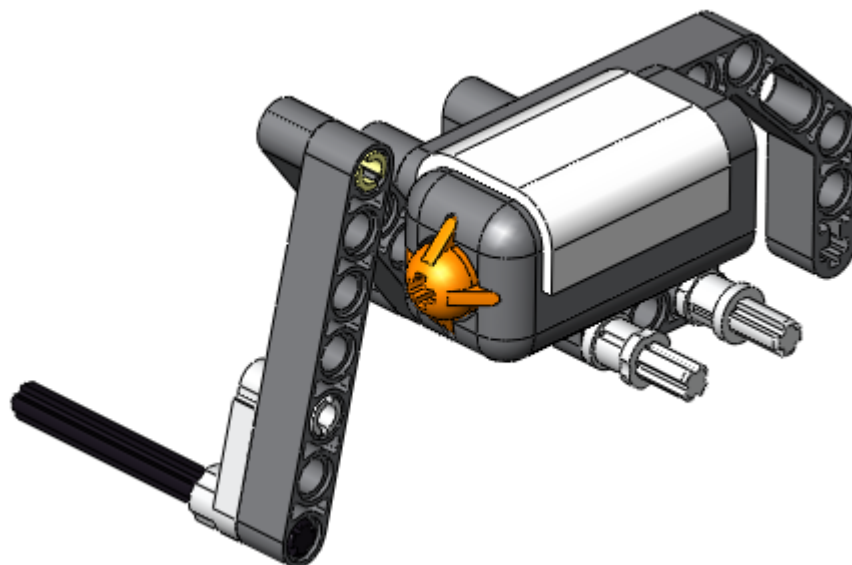
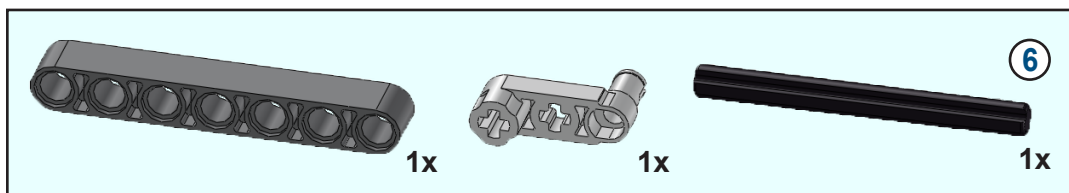
# 7



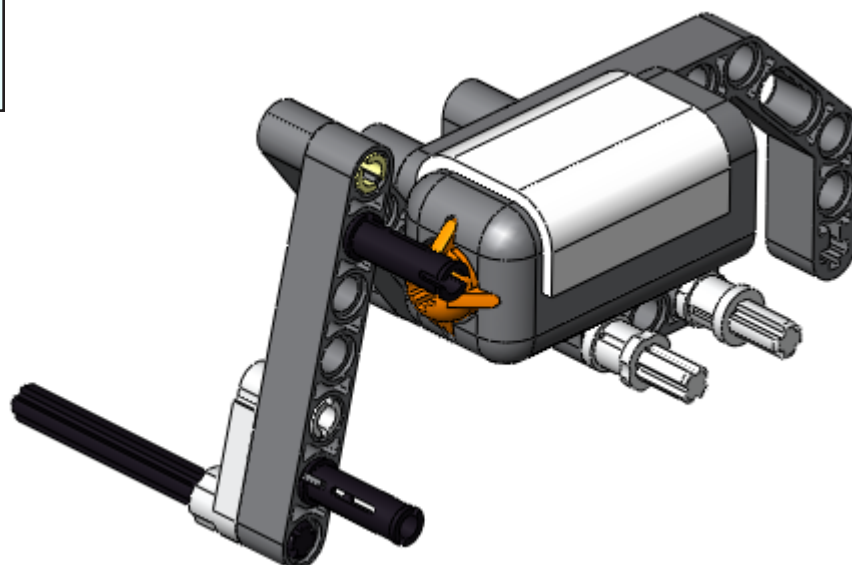
# 8



# 9

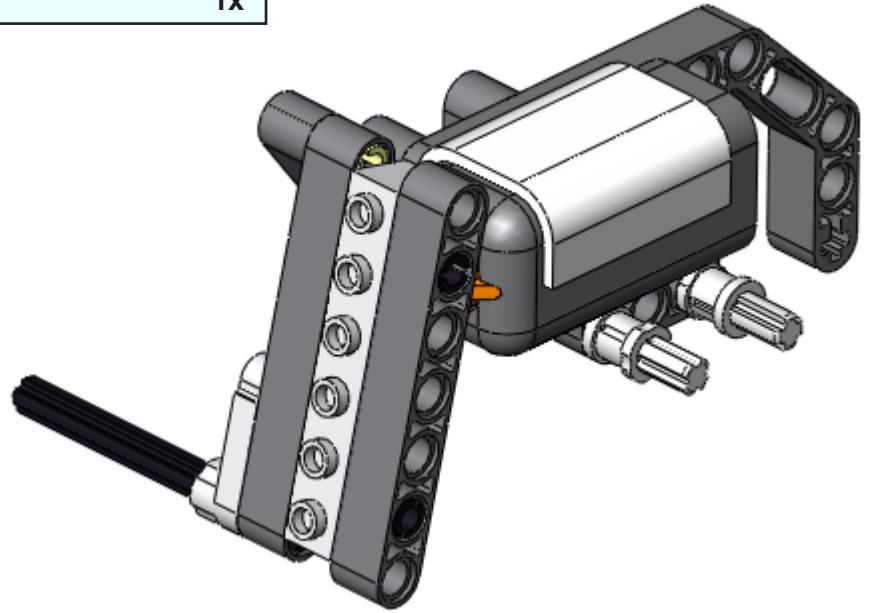
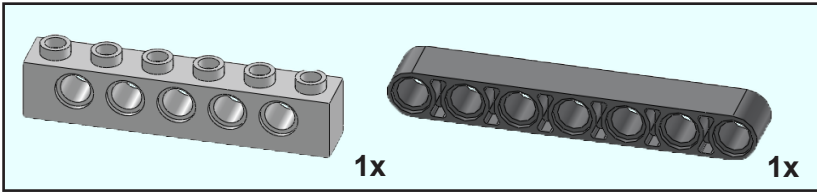


# 10

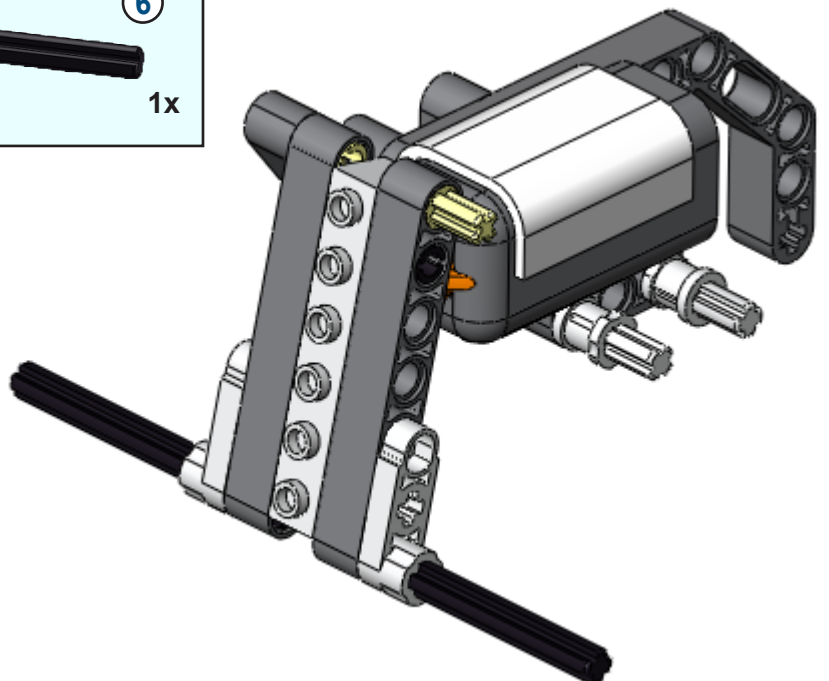
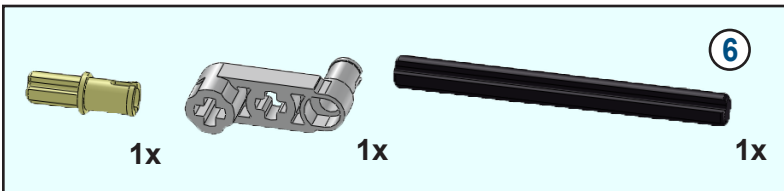




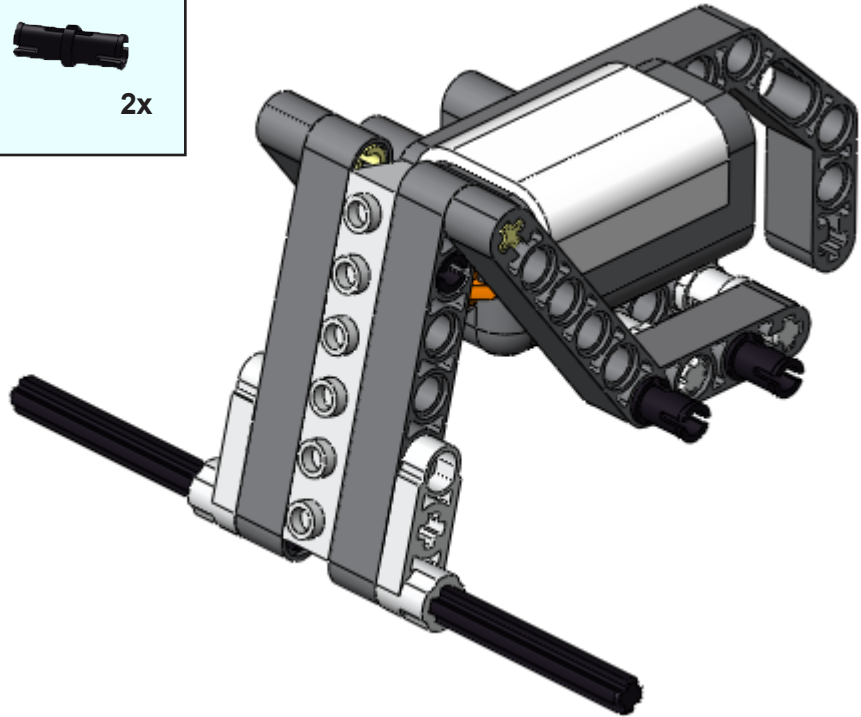
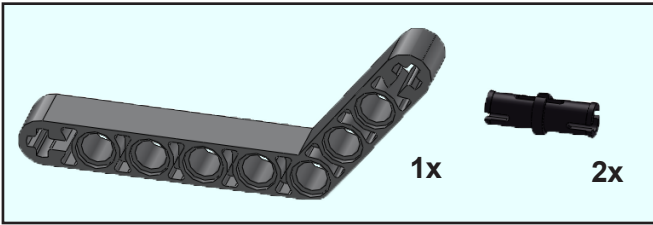
# 11



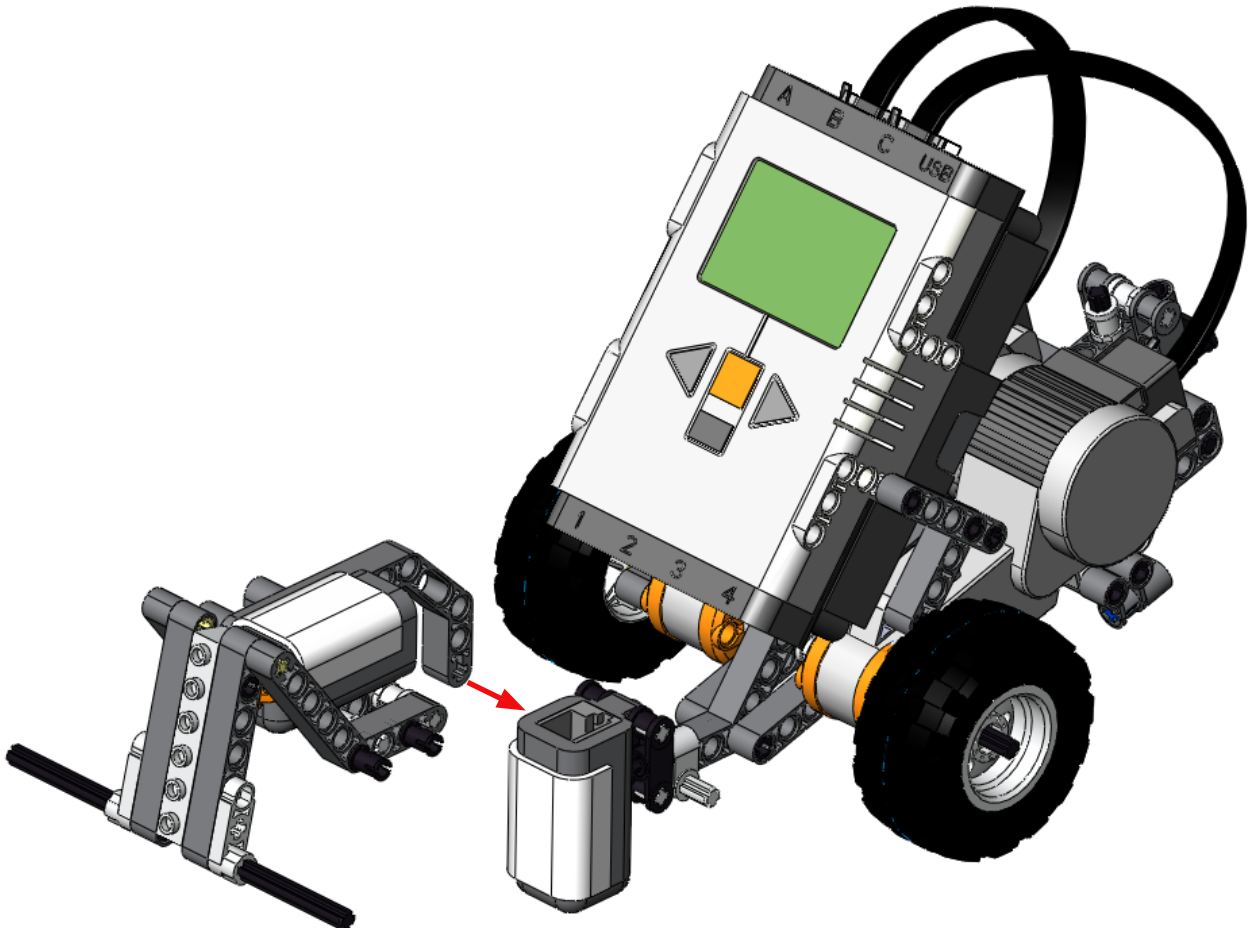
# 12



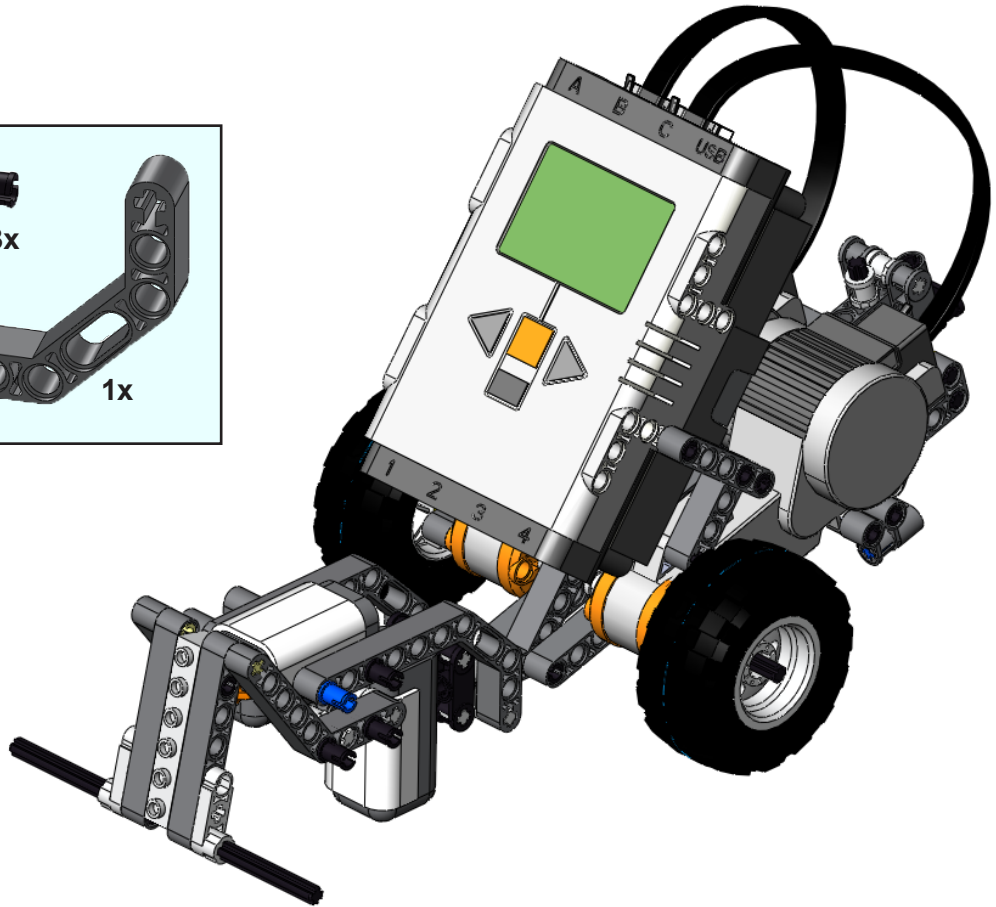
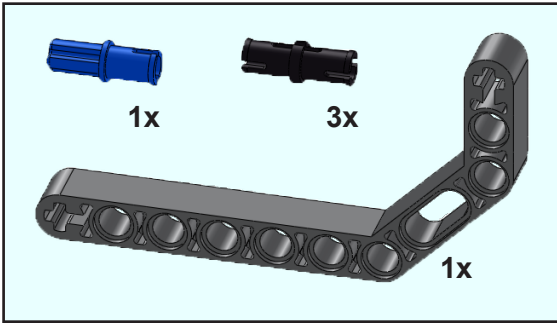
# 13



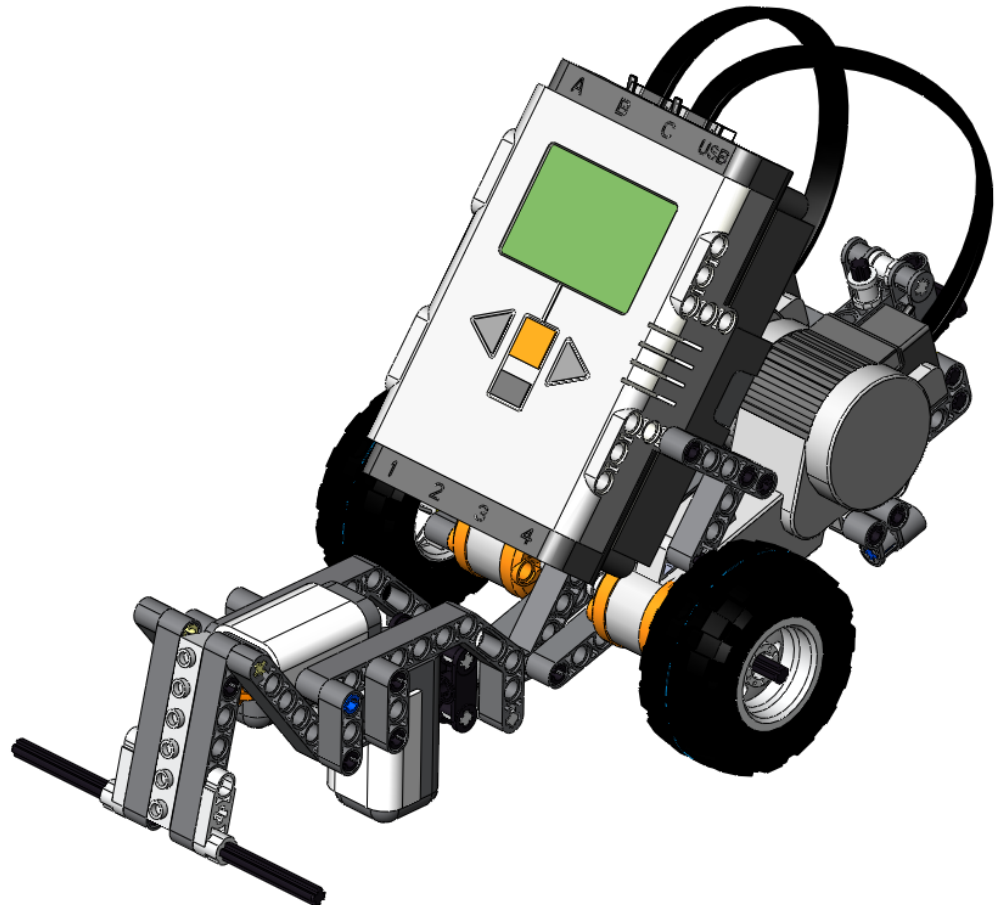
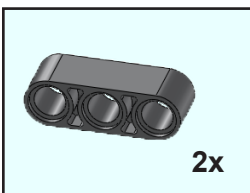
# 14



# 15



# 16



# 17

